

This is a sample of the handbook which contains actual pages from the handbook.

The full handbook can be navigated using the normal pdf methods and, additional methods which make it easy to use in full-screen mode.

The additional methods are:-

Hyperlinks - either from the side navigation bar, the "Contents" page, any of the eight "Index" pages, or links referring you to another page of the handbook.

In the full handbook you will also find "Back" and "Next" buttons which navigate to the previous or the next page.

In this sample

The buttons allow you to move forward or backward through the "Sample".

Hyperlinks here are either [Red](#) or [Blue](#).

The red ones (blue in the full handbook) don't do anything here.

The blue ones go to the corresponding page of the handbook (the sample pages).

This sample will give you a very good idea of the clarity and presentation. (11 of the 223 pages)

To get started click one of the blue activated hyperlinks. (top left, "Contents" or "Index")

I hope you like it *Mike*

[Controls](#)[Instruments](#)[DIS - Info sys](#)[Doors](#)[Lights](#)[Seats](#)[Heating](#)[Driving](#)[Comms](#)[Safety](#)[Tips](#)[Maintain](#)[DIY](#)[Tech Data](#)

About - About this handbook
Home - Sample front page

[About](#)
[Home](#)

Controls

Controls & display locations [Controls-01](#)

Instruments

Instrument cluster [Instruments-01](#)
Digital clock [Instruments-02](#)
Speedometer [Instruments-05](#)
Service indicator [Instruments-06](#)
Warning lamps [Instruments-08](#)
ABS [Instruments-11](#)

DIS - Driver Information System

DIS [DIS-01](#)
Speedometer [DIS-05](#)
Red warning lamps [DIS-06](#)
Yellow warning lamps [DIS-08](#)
Speed limit setting [DIS-12](#)
On-board computer [DIS-14](#)

Doors

Locks, keys [Doors-01](#)
Central locking system [Doors-04](#)
Tailgate manual release [Doors-09](#)
Anti-theft alarm [Doors-11](#)
Electric windows [Doors-13](#)

Lights

Lights [Lights-01](#)
Interior lights [Lights-05](#)
Wipers [Lights-08](#)
Rear-view mirrors [Lights-10](#)
Exterior mirrors [Lights-11](#)

Seats

Seat settings [Seats-01](#)
Seat heating [Seats-06](#)
Luggage compartment [Seats-07](#)
Roof carrier [Seats-10](#)
Cup holders [Seats-11](#)
Ashtray, cigarette lighter,
Power sockets [Seats-12](#)
Storage compartments [Seats-14](#)

Heating

Air conditioner [Heating-01](#)
Heating [Heating-03](#)

Driving

Steering wheel [Driving-01](#)
Engine starting [Driving-02](#)
Handbrake, parking [Driving-04](#)
Cruise control [Driving-05](#)
Speed control [Driving-06](#)
Auto gearbox [Driving-08](#)

Communication & Navigation (Comms)

Phones, sat nav, etc [Coms-01](#)
HomeLink [Coms-03](#)

Safety

Seat belts [Safety-02](#)
Air bag system [Safety-10](#)
Child safety [Safety-18](#)

Tips

Electronic Stability Program [Tips-01](#)
Electronic differential [Tips-02](#)
Traction control ASR [Tips-03](#)

ABS Anti-lock brakes [Tips-04](#)
Power steering [Tips-06](#)
4-wheel drive, quattro [Tips-06](#)
Catalytic converter [Tips-09](#)
Driving abroad [Tips-10](#)
Headlight setting [Tips-11](#)

Maintain

Bodywork care [Maintain-01](#)
Interior care [Maintain-07](#)
Fuel and tank filling [Maintain-11](#)
Fluid levels [Maintain-14](#)
Under-bonnet layout [Maintain-16](#)
Engine oil [Maintain-17](#)
Cooling system [Maintain-20](#)
Brake fluid [Maintain-23](#)
Battery [Maintain-24](#)
Washer top up [Maintain-30](#)
Wheels, tyres and bolts [Maintain-31](#)
Snow chains [Maintain-37](#)
Modifications, retrofit [Maintain-38](#)

DIY

First-aid kit, Warn triangle [DIY-01](#)
Tool kit, spare wheel [DIY-02](#)
Compact spare wheel [DIY-03](#)
Wheel changing [DIY-04](#)
Jump starting [DIY-11](#)
Tow starting [DIY-13](#)
Recovery towing [DIY-16](#)
Fuses and bulbs [DIY-17](#)

Technical data

Vehicle identification [Tech Data-02](#)
Fuel consumption [Tech Data-04](#)
Performance data [Tech Data-05](#)
Weights & dimensions [Tech Data-06](#)



Home - Front cover of this sample [Home](#)

A

About this copy of the Handbook - - [About](#)

ABS See Anti-lock brake system [Instruments-11](#)

Accessories - - - - - [Maintain-38](#)

Adjuster / test button - - - [Instruments-05](#)

Air conditioner - - - - - [Heating-01](#)

 Air distribution - - - - - [Heating-06](#)

 Air outlets - - - - - [Heating-07](#)

 Air recirculation mode - - [Heating-04](#)

 Automatic mode - - - - - [Heating 04](#)

 Blower - - - - - [Heating-06](#)

 Controls - - - - - [Heating-03](#)

 Defrosting - - - - - [Heating-04](#)

 ECON mode - - - - - [Heating-05](#)

 Economical operation - - - [Heating-08](#)

 Key-coded settings - - - - [Heating-08](#)

 Temperature selection - - - [Heating-04](#)

Air bags - - - - - [Safety-04](#)

 Deactivation - - - - - [Safety-16](#)

 Front airbags - - - - - [Safety-12](#)

 Key switch : front air bag - [Safety-07](#)

 Side airbags - - - - - [Safety-14](#)

 Triggering of airbags - - - [Safety-11](#)

 Warning lamp - - - - - [Instruments-10](#)

Alarm system : see anti theft [Doors-11](#)

Alterations to the vehicle - [Maintain-38](#)

Alternator : Warning lamp - [Instruments-12](#)

Anti-dazzle interior mirror - [Lights-10](#)

Antifreeze - - - - - [Maintain-18](#)

Anti-knock properties of petrol [Maintain-11](#)

Anti-lock brakes, how system works - [Tips-04](#)

Anti-lock brakes, Warning lamp - [Instruments-11](#)

Anti-theft alarm - - - - - [Doors-11](#)

 Interior monitor - - - - - [Doors-13](#)

Anti-theft wheel bolts - - - - [DIY-10](#)

Ashtray - - - - - [Seats-12](#)

Auto-check control - - - - - [DIS-04](#)

Auto car wash : see Washing - - [Maintain-02](#)

Automatic cruise control - - - [Driving-05](#)

Automatic gearbox - - - - - [Driving-08](#)

 Back-up programme - - - - - [Driving-14](#)

 Dynamic shift programme - - [Driving-12](#)

 Kick-down feature - - - - - [Driving-12](#)

 Safety interlock for ignition key - [Driving-02](#)

 Selector lever lock - - - - - [Driving-11](#)

 Selector lever positions - - - [Driving-09](#)

 Steering wheel & tiptronic controls [Driving-14](#)

 Tiptronic - - - - - [Driving-13](#)

Automatic wash and wipe - - - - [Lights-08](#)

Average fuel consumption - - - - [DIS-16](#)

Average speed - - - - - [DIS-16](#)

B

Battery - - - - - [Maintain-24](#)

 Charging - - - - - [Maintain-28](#)

 Checking electrolyte level - [Maintain-27](#)

 Disconnecting & reconnecting [Maintain-29](#)

 Replacing - - - - - [Maintain-29](#)

 Winter conditions - - - - - [Maintain-28](#)

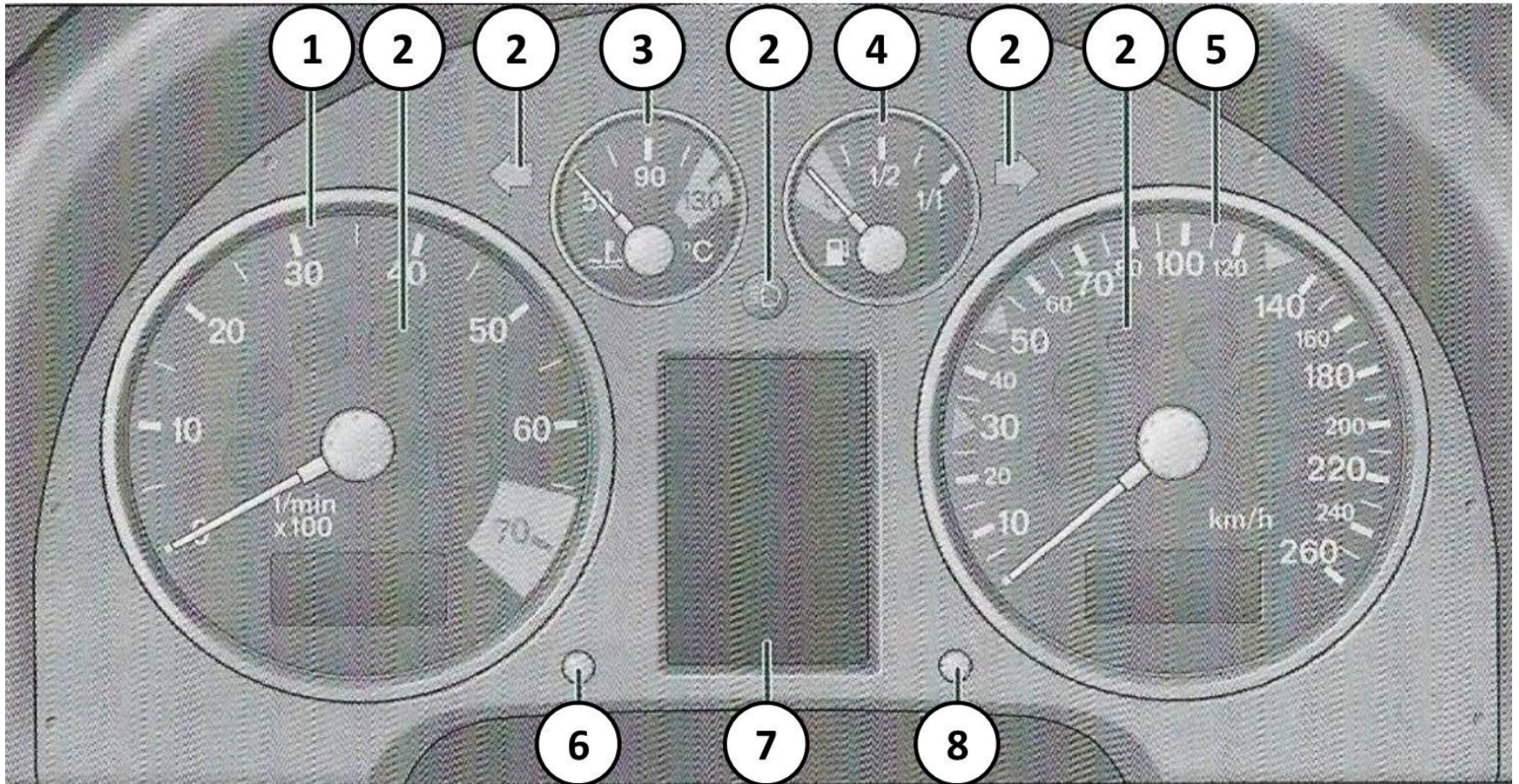
 Battery voltage - - - - - [DIS-10](#)

Belt tensioners - - - - - [Safety-09](#)



Instrument Cluster

Fig. 3. Some of the instruments and displays are only fitted on certain models or are optional extras.



- 1. Rev counter, digital clock & date - - [Instruments-02](#)
- 2. Warning and indicator lamps - - - [Instruments-08](#)
- 3. Coolant temperature gauge - - - - [Instruments-03](#)
- 4. Fuel gauge - - - - - - - - - - - [Instruments-04](#)
- 5. Speedometer & mileage recorder - - [Instruments-05](#)
- 6. Adjuster/test button - - - - - - - [Instruments-05](#)

- 7. Display:
 - Service indicator - - - - - - [Instruments-06](#)
 - Warning & indicator lamps - - [Instruments-08](#)
 - Outside temperature - - - - - [DIS-03](#)
 - Auto box selector position - - [Driving-09](#)
 - Driver information system - - [DIS-01](#)
- 8. Trip recorder reset button - - [Instruments-05](#)



The remote control transmitter and the batteries are incorporated in the handle of the key. The receiver is in the interior of the vehicle. The maximum range of the remote control depends on various factors. The range is reduced when the batteries start to lose power.

The remote control incorporates a foldaway key that can be used to manually lock or unlock the vehicle and start the engine.

If a lost key has been replaced, or if the receiver is repaired or replaced, the system must be re-programmed by an Audi dealer before the remote control will operate again.

The remote control (which is radio-operated) conforms with all relevant requirements for Germany and has been approved by the Federal Approvals Office for Telecommunications of the Federal Republic of Germany. All components are marked in accordance with the current legal requirements. This certification forms the basis for approval for use in other countries.

**Note**

* The remote control is automatically deactivated when the ignition is switched on.

* The function of the remote control may be temporarily impaired by interference from other nearby radio signals (for example from a mobile telephone or TV transmitter) if these are in the same frequency range.

**Note (From Mike)**

1997-2006 MK 1 Audi TT : Key fob frequency : 215 Mhz

Mk 1 remote key fob : Part number : MYT8ZO837231

Battery for remote key fob : CR 2302

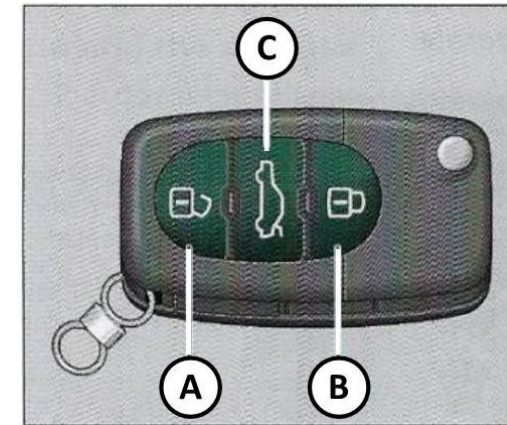
Locking and unlocking the vehicle

Fig. 33

Remote control key: Control buttons

Unlocking the vehicle

- Press button (A), fig.33, for about one second.

Locking the vehicle

- Press button (B) for about one second.

Unlocking the tailgate

- Press button (C) for at least one second.

The turn signals will flash as confirmation when you unlock the car. The vehicle will be locked again automatically if you do not open one of the doors or the tailgate within 60 seconds after unlocking the car with button (A). This function prevents the vehicle from remaining unlocked if the unlocking button is pressed by mistake.



On vehicles with the security locking feature, you can unlock just the driver's door by pressing button (A) once, or the whole vehicle by pressing the button twice.

The turn signals flash once when the vehicle is locked to confirm that the doors and tailgate are properly locked.

**WARNING**

Do not leave anyone (especially children) in the car if it is locked from the outside and the deadlock mechanism is activated: the doors and windows cannot then be opened from the inside. Locked doors could delay assistance in an emergency, potentially putting lives at risk.

**Note**

- * The remote control should only be used when the doors and the tailgate are closed.
- * The anti-theft alarm can be accidentally activated and the vehicle locked if you press the locking button on the remote control inside the vehicle before inserting the key in the ignition. If this should happen by mistake, press the unlocking button.

Re-synchronising the remote control

If the remote control fails to unlock the vehicle, it will be necessary to re-synchronise the system.

- Press one of the buttons on the remote control key.
- Insert the key in the door lock and either unlock or lock the vehicle once.

The re-synchronisation process should not take more than 1 minute.

Anti-theft alarm

Applies to vehicles with anti-theft alarm

Description

The anti-theft alarm triggers an alarm if anyone attempts to break into the vehicle.

The anti-theft alarm helps to prevent the vehicle being broken into or stolen. If the system senses interference with the vehicle it triggers an audible and visible alarm.

How is the system switched on (armed)

The anti-theft alarm system switches on automatically when the vehicle is locked with the remote control, or by turning the key in the driver's door or passenger's door (provided the doors are closed). The system becomes active (armed) about 30 seconds after the vehicle is locked.

If you turn the key twice to the "lock" position within one second, the anti-theft warning system is not activated.

How is the system switched off?

The anti-theft alarm is only switched off when the vehicle is unlocked using the remote control. The vehicle will lock itself again automatically if none of the doors are opened within 60 seconds after pressing the remote control button.

If the vehicle is opened with the key on the driver's door, the passenger side door remains locked. The anti-theft alarm is only switched off if the key is inserted into the ignition lock within 15 seconds and the ignition is switched on. Otherwise the system triggers the alarm.

The system triggers an alarm immediately if the vehicle is unlocked on the passenger's door using the key. The alarm stops if the passenger's door is closed again or when the alarm cycle finishes.



Windscreen wipers



Windscreen wipers

The windscreen wiper lever control the windscreen wipers and the automatic wash and wipe.

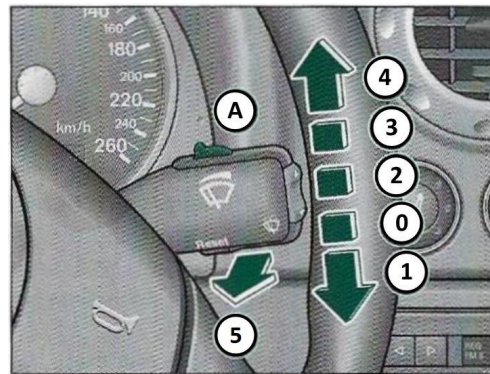


Fig. 46
Wiper lever

The windscreen wiper lever (fig. 46) has the following settings:

Brief wipe

- Move the lever down to position (1) to give the windscreen a brief wipe.

Intermittent wipe

- Move the lever up to the stop (2).
- Move the control (A) to set the wiper intervals.

Slow wiper speed

- Move the lever up to the stop (3).

Fast wiper speed

- Move the lever up to the stop (4).

Automatic wash and wipe

- Pull the lever to position (5)
- Release the lever again. The washer will stop and the wipers will keep running for approximately 4 seconds.

Switching off the wipers

- Move the lever to the "off" position (0).

The washers and wipers will only work when the ignition is switched on.

The wiper intervals in the intermittent wipe settings are also varied automatically according to the road speed (in addition to the manual delay setting).

The windscreen washer jets are heated when the ignition is switched on.

Ashtray

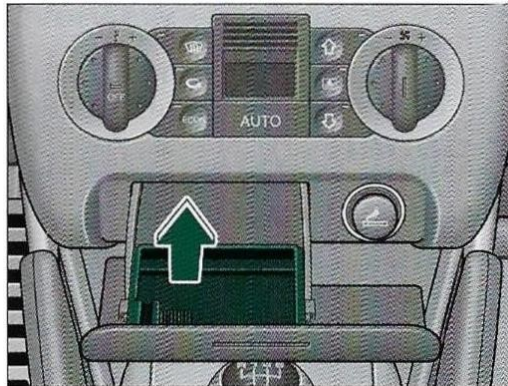


Fig. 62

Centre console: Ashtray open

Opening the ashtray

- Lightly press the front of the ashtray.

Removing the ashtray

- Take hold of both sides of the ashtray and lift it out, see fig. 62.

Inserting the ashtray

- Insert the ashtray and press it into its mountings.



WARNING

Never put waste paper in the ashtray, as this could cause a fire.

Cigarette lighter and electrical sockets

Cigarette lighter

The 12 volt socket for the cigarette lighter can also be used as a power source for other electrical appliances.

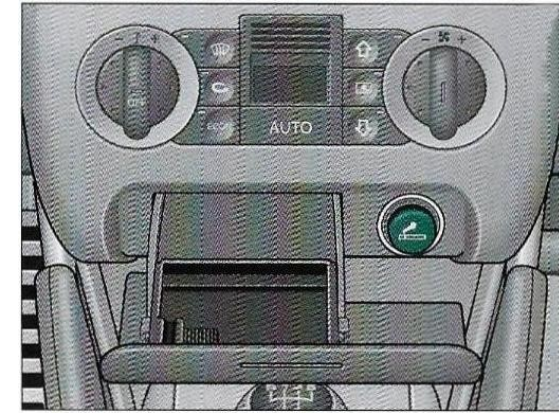


Fig. 63

Opened ashtray with cigarette lighter.

Using the cigarette lighter

- Lightly press the front of the ashtray lid for access to the cigarette lighter.
- Press in the cigarette lighter knob.
- Wait for the lighter to spring out.
- Pull out the cigarette lighter immediately.
- Use the glowing heater element of the cigarette lighter to light your cigarette.
- Put the cigarette lighter back in its socket.



Control switches

The controls for the air conditioner at a glance.

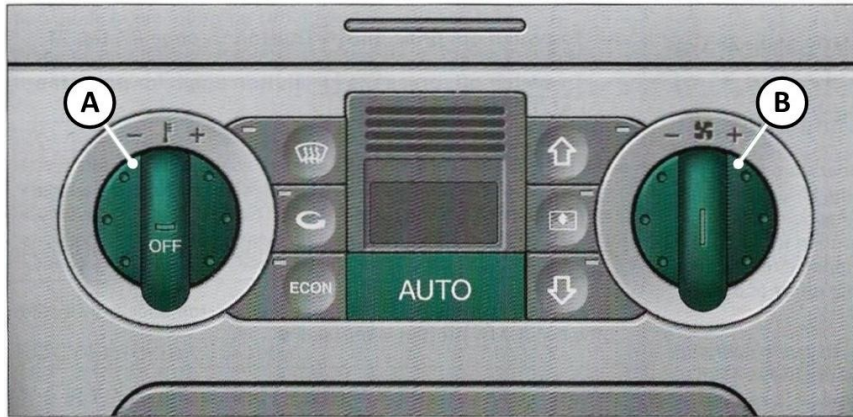


Fig. 71
Air conditioner controls

The functions can be switched on and off by briefly pressing the buttons.

The diodes in the buttons light up when the function is switched on.

BUTTONS	FUNCTION
	Automatic mode
	Defrosting windows
	Air recirculation mode
	Switches off air cooling
	Air to the windows
	Air from the dashboard outlets
	Air to the footwells

The last three buttons (Air up, down or dashboard outlets), which regulate the air distribution can either be selected individually or in combination.



Automatic gearbox

tiptronic (6-speed automatic gearbox)

Applies to vehicles with 6-speed automatic gearbox

Introduction

The vehicle is equipped with an electronically controlled 6-speed automatic gearbox. The gearbox changes up and down automatically.

For the sake of fuel economy (and the environment), the gearbox ratios on some models are designed so that maximum speed is only obtained when the selector lever is in position S.

The gearbox also has the tiptronic manual shift feature. This allows the driver to select gears manually if required, see ([Driving-13](#)).

Applies to vehicles with 6-speed automatic gearbox

General notes on driving an automatic

The gearbox changes the forward gears up and down automatically.

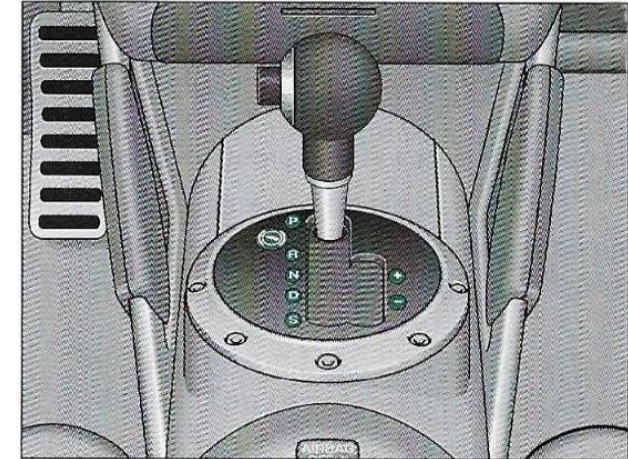


Fig. 77

Detail of the centre console:
Selector lever with the interlock button

Driving away from a standstill

- Press and hold the interlock button (the button in the selector lever handle), move the selector lever to the desired position, for instance D (see [Driving-10](#)), and release the interlock button.
- Wait for the gearbox to engage the gear (a slight movement can be felt).
- Release the brake and press the accelerator. (see Warning on next page)



Front airbags

Description of front airbags

The airbag system is not a substitute for the seat belts.

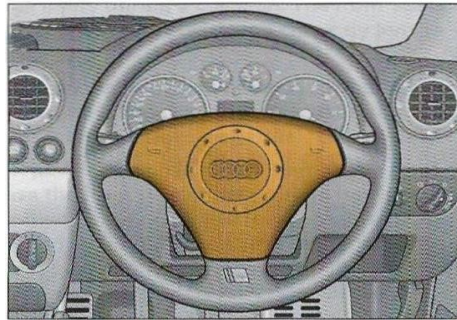


Fig. 95

Driver's airbag in steering wheel

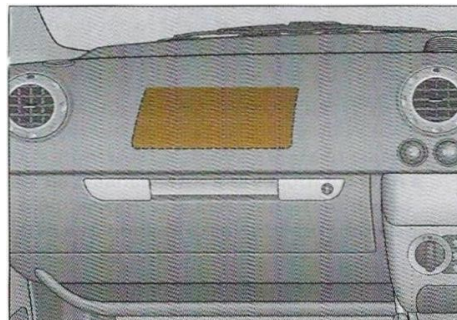


Fig. 96

Front passenger's airbag in dashboard

The front airbag for the driver is located in the padded hub of the steering wheel (Fig. 95). The front airbag for the passenger is in the dashboard above the glove box (Fig. 96). The locations of the airbags are marked with the word "AIRBAG".

In conjunction with the three-point seat belts, the front airbags give additional head and chest protection for the driver and front passenger in the event of a severe frontal collision. See Warning on [Safety-13](#) "Important safety notes on the front airbag system".

How the front airbags work

When fully inflated, the airbags reduce the risk of head or chest injury.

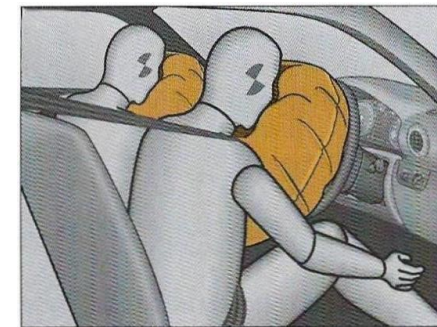


Fig. 97

Front airbags in inflated condition

The airbag system is designed so that the airbags for the driver and front passenger are triggered in a severe frontal collision.

In certain types of accident the front airbags and the side airbags may be triggered together.



Fuel and filling the tank

Petrol

Petrol grades

Using the correct grade of fuel is important for the environment and helps to avoid any possibility of damage to the engine.

There are various different grades of petrol. The correct grade for your vehicle can be found on [Tech Data-06](#) "Performance, weights and dimensions". The same information is given on the inside of the tank flap on your vehicle.

In some countries, both unleaded and leaded petrol are available. All Audi vehicles are equipped with a catalytic converter and must only be run on unleaded petrol. Unleaded petrol must comply with the DIN EN 228 Standard (DIN stands for "DEUTSCHES Institut für Normung e. V." EN for "European Norm").

The different kinds of petrol have different octane ratings (RON). If in exceptional circumstances, the correct octane rating is not available:

Your engine normally requires Super Plus unleaded petrol (98 RON) according to, see [Tech Data-06](#) "Performance, weights and dimensions". Premium unleaded fuel with a 95 RON can also be used (although this may cause a slight loss of power in unfavourable conditions). - if premium unleaded petrol is not available, the engine can be run on regular unleaded petrol with 91 RON as an emergency measure. In this case only use moderate engine speeds and a light throttle. Avoid using full throttle. Fill up with premium or Super Plus petrol as soon as possible.

Please also refer to the notes on [Maintain-12](#).



Caution

- * Even one tank full of leaded fuel would permanently impair the efficiency of the catalytic converter.
- * High engine speed and full throttle can damage the engine when using petrol with an octane rating lower than the correct grade for the engine.

Petrol additives

Additives in the petrol help to preserve the quality of the engine.

Smooth running, performance and the life span of your engine depend a great deal on the quality of the petrol used and the additives it contains. These additives will help to prevent corrosion, keep the fuel system clean and prevent deposits from building up in the engine.

For this reason, you should only use good quality petrol containing suitable additives. If this is not available, or if you should experience engine performance problems such as poor starting, stalling when idling, hesitation or loss of power, you can put in the necessary additives yourself when filling the tank. These additives will help to prevent corrosion, keep the system clean and prevent deposits from building up in the engine.

Not all commercially available additives have proved to be effective. For this reason we recommend using "Genuine Volkswagen/Audi fuel additives for petrol engines", which have been tested and approved for your engine and are available from Audi dealers who can also tell you how to use additives and when to use them.

No other additives should be mixed with the petrol.

